

# TAPE & REEL METAL DOMES

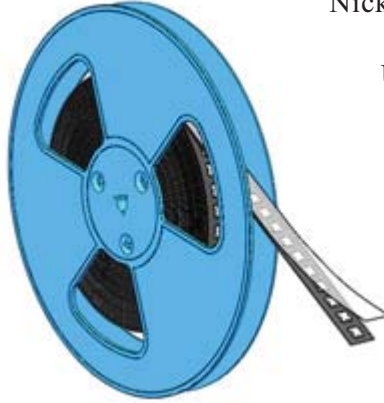
8.4mm, 10mm, 12.4mm & 16mm Standard  
Others Available upon Request

Stable Forces per Batch Number  
Excellent Tactile Effect

100% Traceability per  
Batch Number

High Quality

Available With or Without Dimple



Nickel or Gold Plating Options Available

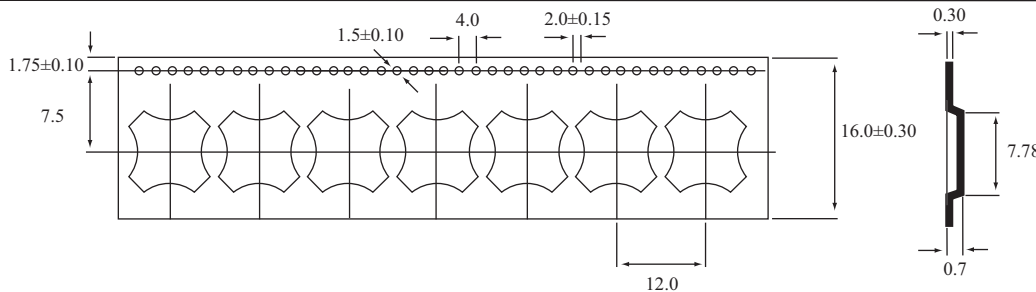
Used in a multitude of Industries,  
such as: Membrane Switch,  
Automotive,  
Consumer Electronics,  
Medical, Appliances, etc

RoHS  
Compliant



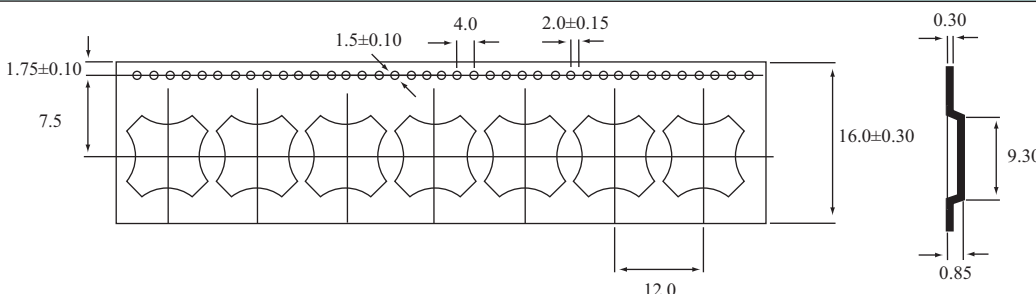
Contact Configuration	SPST, Normally Open	Contact Resistance	<100 ohms
Contact Bounce (on)	<0.3ms	with Gold or Silver Plating	<1 ohm
Contact Bounce (off)	<6ms	Voltage/Current Maximum	12mA @ 24 Volts DC, RL
Operating Temperature	-55°C to 125°C	Breakdown Voltage	Over 200 Volts
Storage Temperature	-55°C to 125°C	Material	Stainless Steel Type 304
Humidity	0-97% (no condensation)	Life Expectancy	1 Million

## MDT 8.4-4-LEG-XXX



Forces: 280g, 320g, 350g,  
400g & 450g  
Reel Quantity: 5,000 Pcs  
Reel Diameter 330mm (13")  
With or Without Dimple  
Reverse/upside down  
available

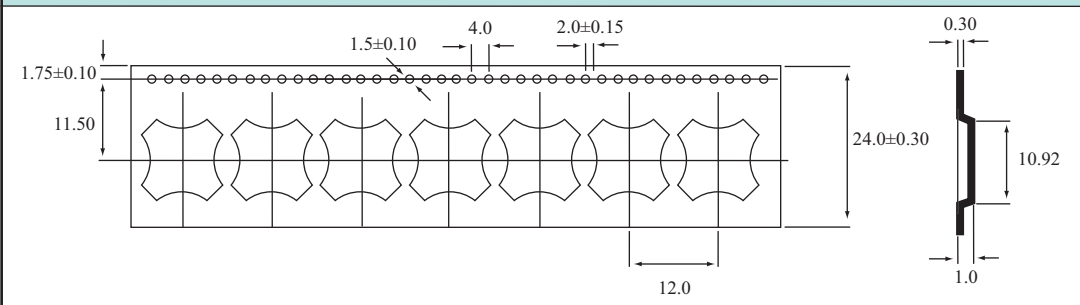
## MDT10-4-LEG-XXX



Forces: 200g, 280g, 320g,  
350g, 400g & 450g  
Reel Quantity: 5,000 Pcs  
Reel Diameter 330mm (13")  
With or Without Dimple  
Reverse/upside down  
available

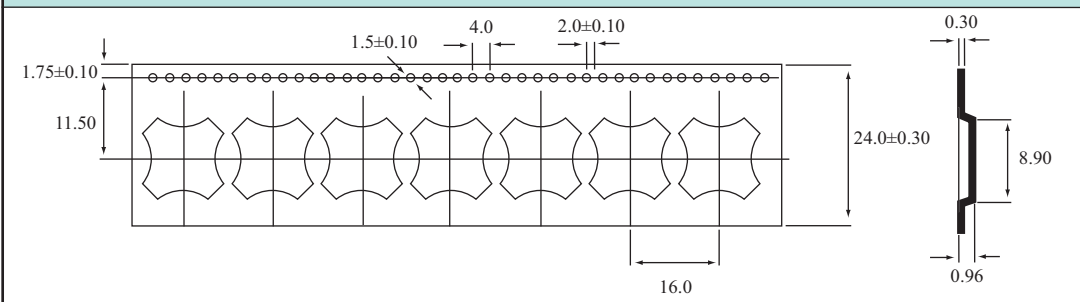
# TAPE & REEL METAL DOMES

## MDT12.2-4-LEG-XXX



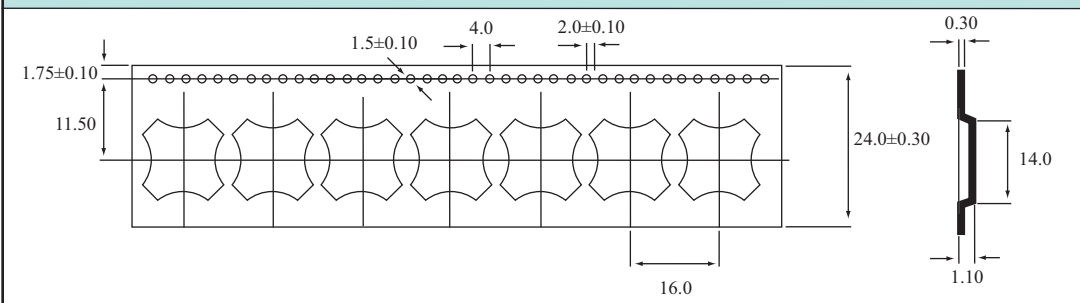
Forces: 150g, 200g, 240g,  
280g, 350g, 400g  
& 450g  
Reel Quantity: 4,000 Pcs  
Reel Diameter 330mm (13")  
With or Without Dimple  
Reverse/upside down  
available

## MDT14-4-LEG-XXX



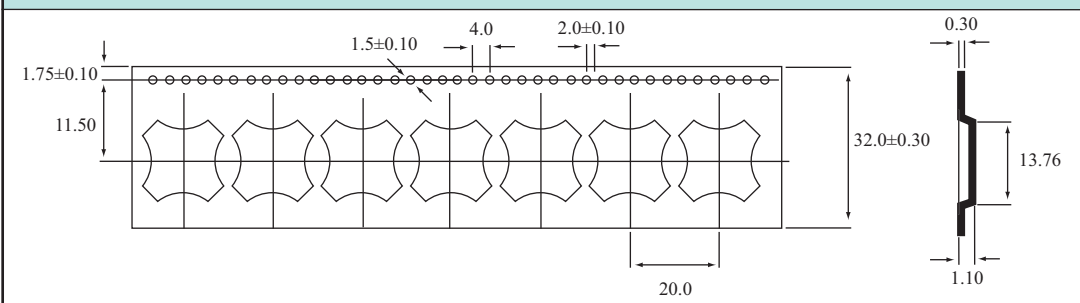
Forces: 280g, 350g & 400g  
Reel Quantity: 3800 Pcs  
Reel Diameter 330mm (13")  
With or Without Dimple  
Reverse/upside down  
available

## MDT16-4-LEG-XXX



Forces: 280g, 350g & 450g  
Reel Quantity: 3000 Pcs  
Reel Diameter 330mm (13")  
With or Without Dimple  
Reverse/upside down  
available

## MDT20-4-LEG-XXX



Forces: 280g, 350g & 450g  
Reel Quantity 2800 Pcs  
Reel Diameter 330mm (13")  
With or Without Dimple  
Reverse/upside down  
available

**MEMCON (Asia) Limited**

Level 7 Parkview Centre  
7 Lau Li Street Causeway Bay Hong Kong  
T +852 3741 1411 F +852 3747 8980  
www.memcon.asia sales@memcon.asia

**MEMCON Limited**

Compass House Vision Park Chivers Way HISTON  
Cambridge CB24 9AD United Kingdom  
T +44 1223 257724 F +44 1223 257800  
www.memcon.eu sales@memcon.eu  
MEMCON® is a registered trade mark of Memcon Limited

**MEMCON North America**

3786 Stadium Drive Bridgman  
Michigan 49106 USA  
T +1 269 466 5632 F +1 269 466 6034  
www.memcon.net sales@memcon.net